

Fusion Label Designer Instructions

1. To install the Fusion Label Designer, click the link located on the product page on the Fusion Website (<http://www.fusiondigitalpaper.com/Fusion-Die-Cut-Name-Badge/>)

Product Applications, Specifications & Optimum Equipment Settings

- ▶ Product Applications PDF
- ▶ Product Specifications PDF
- ▶ Die Cut Template Instructions PDF
- ▶ Die Cut Template Program

Fusion Digital Paper™ Products

Toner Digital Sheets

- ▶ Fusion Soft Polyester
- ▶ 13mil Fusion Polyester Cover
- ▶ Fusion Rigid Polyester

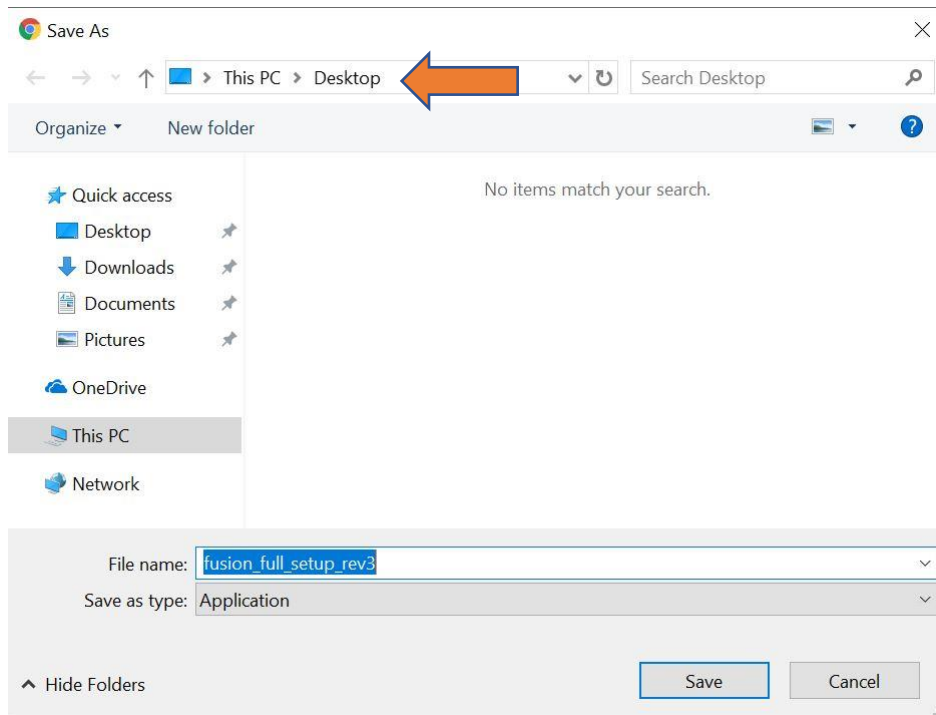
Interested In Our Product?
CLICK HERE
To Contact Us

Recently we modified this product so that it can be printed with both laser and inkjet printing on small format/office desktop printers. Fusion 8.5x11 (6-up) Die Cut Name Badge is sold in 8.5x11 sheets which have six 3" x 4" labels per sheet. It's a "Back to the Future" idea to revisit the old legacy "hello my name is" pressure sensitive adhesive fabric name badge of yesteryear, but with modern digital printing capabilities.

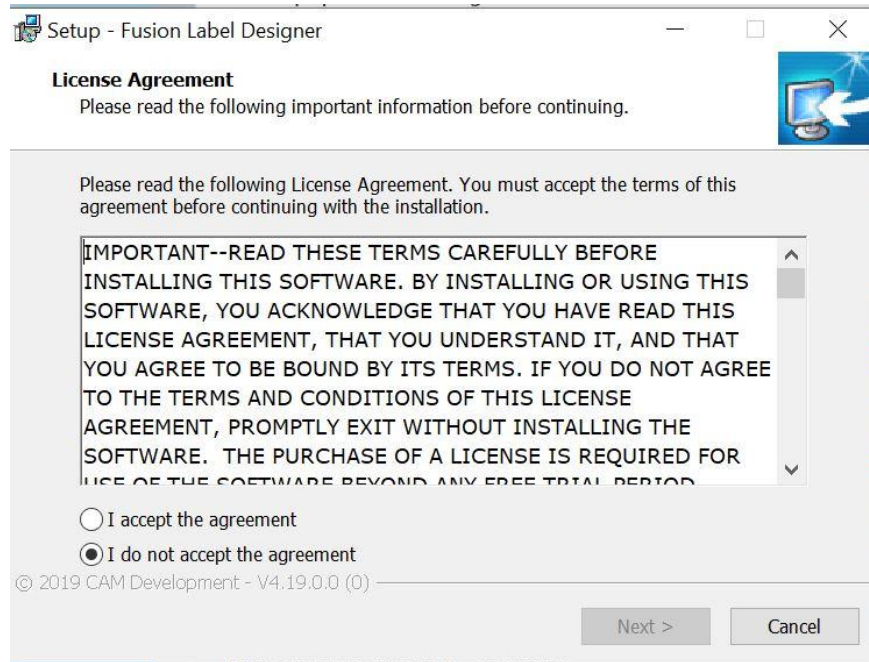
Fusion 8.5x11 (6-up) Die Cut Name Badge has a top coated satin acetate face stock specifically engineered for inkjet and toner digital imaging. The face stock is very smooth and will conform to any shape or sized person. And the pearlescent look and fabric feel of the satin acetate face stock enhances both the visual and tactile value of your name badge. In combination with a very high-quality apparel adhesive, the result is an easy to use peel-n-stick name badge that actually sticks and stays in place for an entire day – or more.

The ease of peel-n-stick, without the use of lanyards and plastic holders, has great value to many events, especially one-day events and conferences. For multi-day events you could easily supply a separate badge to the customer for each day of the event. Because of the cost effectiveness of our Fusion 8.5x11 (6-up) Die Cut Name Badge the cost of multiple badges should still be quite favorable when compared to the combined cost of plastic holder, lanyard, and paper cardstock.

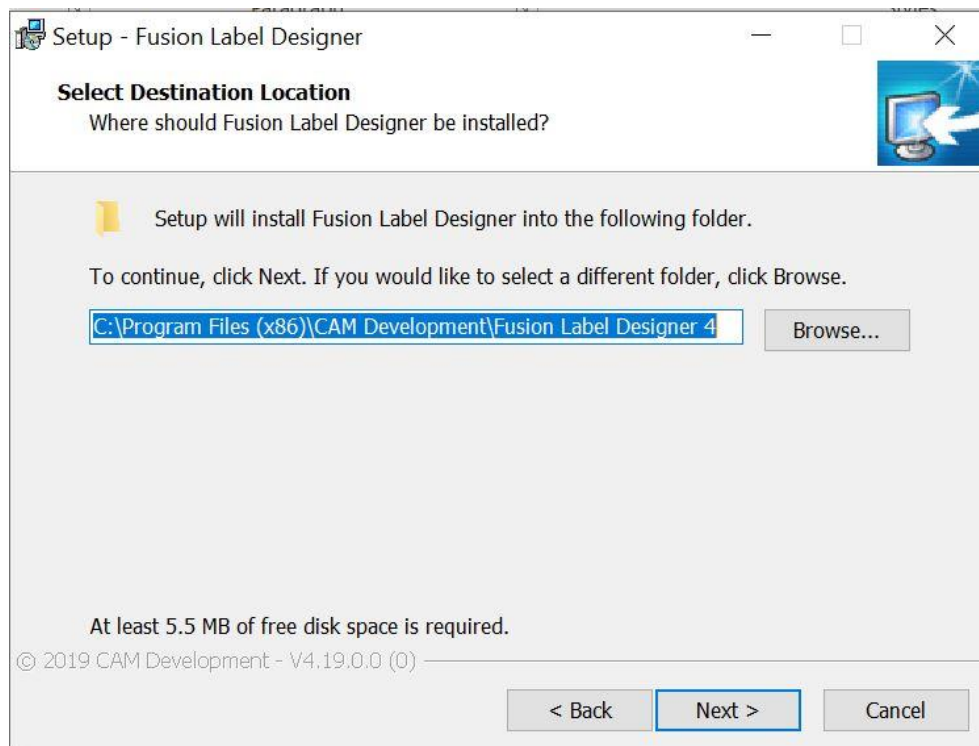
2. A window will pop up asking you to save the .exe file so that you can install the Fusion Label Designer program. Please make note of where you save it so that you can find it later to complete the install process.



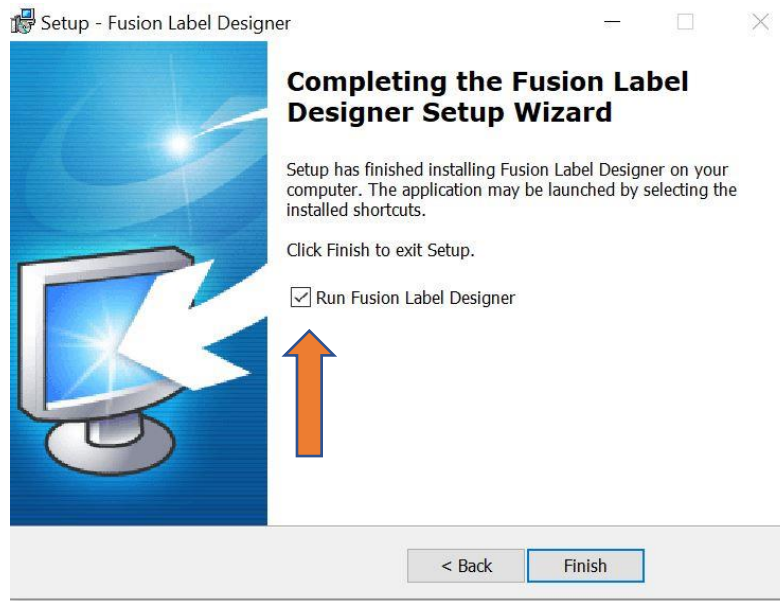
3. To install the Fusion Label Designer, double click the icon of the program wherever it was saved. **Please note that the program will ask if you want to make changes to your computer. Please select, "Yes."** Next, the program will display the license agreement, please read and accept to continue the installation process.



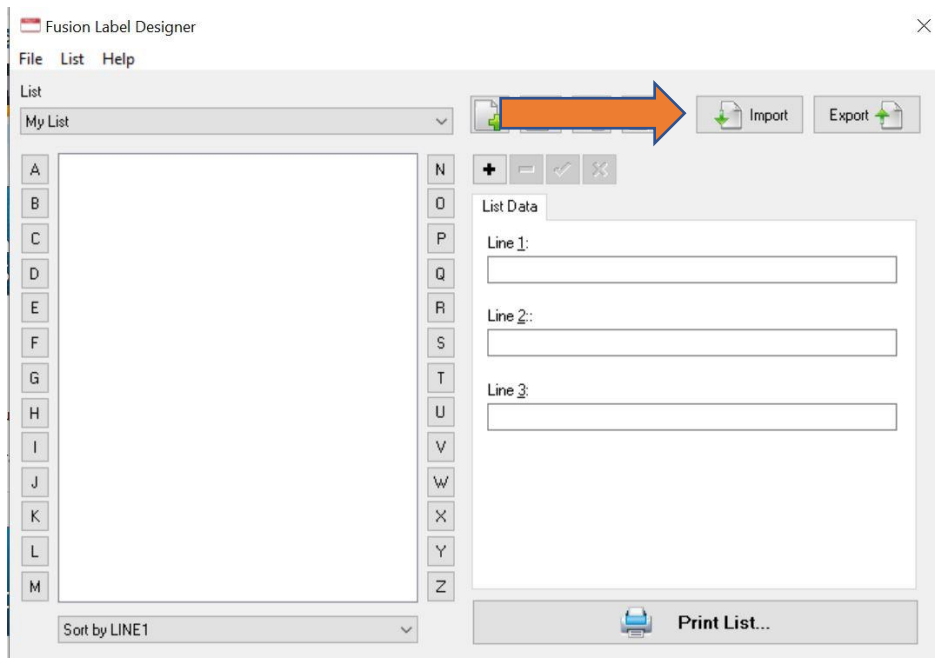
4. Next, the install process will ask you where the Fusion Label Designer will be installed. By default, it will install the program in the Program Files folder.



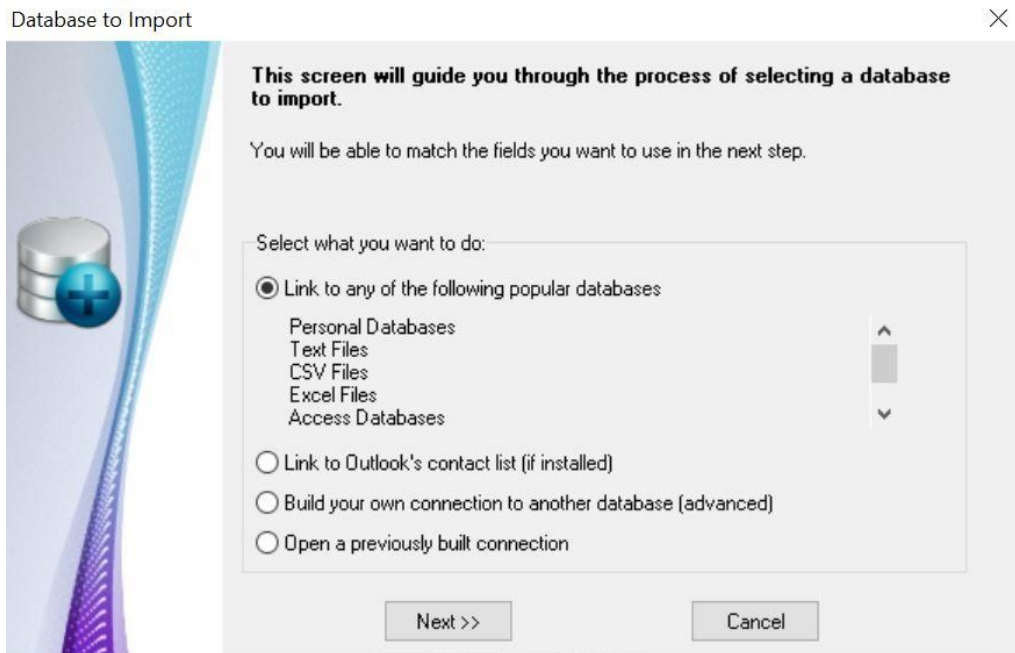
5. The Fusion Label Designer will quickly install and then tell you that the setup is now complete. By default, the “Run Fusion Label Designer” box is checked and will open as soon as you hit the “Finish” button. Uncheck this box if you do not wish to run the program at this time.



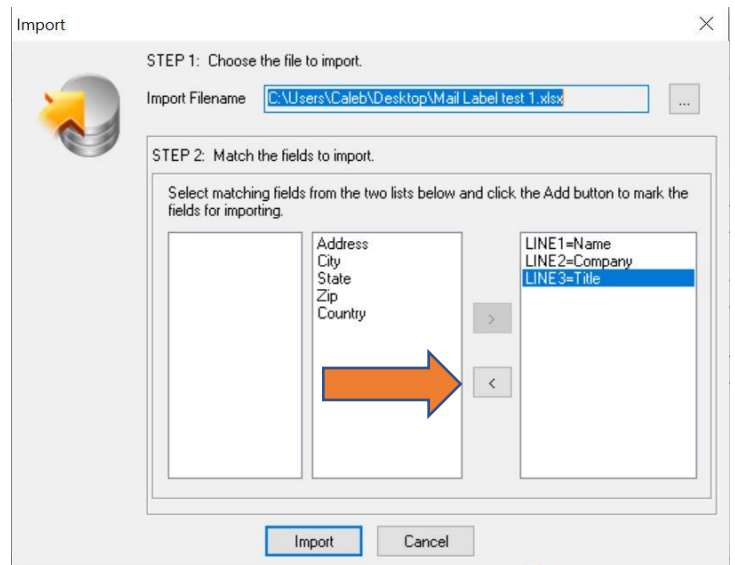
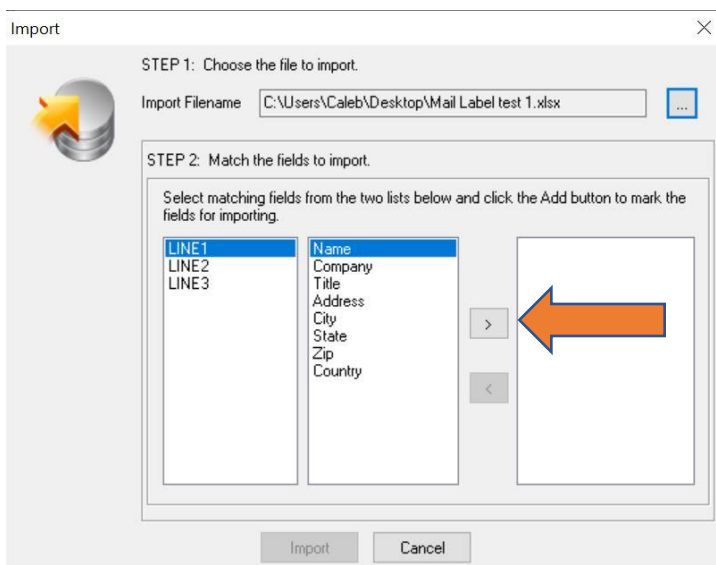
6. With the Fusion Label Designer installed, you can start designing name badges for your next event. First, we'll go over how to import a list of contacts into the program by clicking the “Import” button.



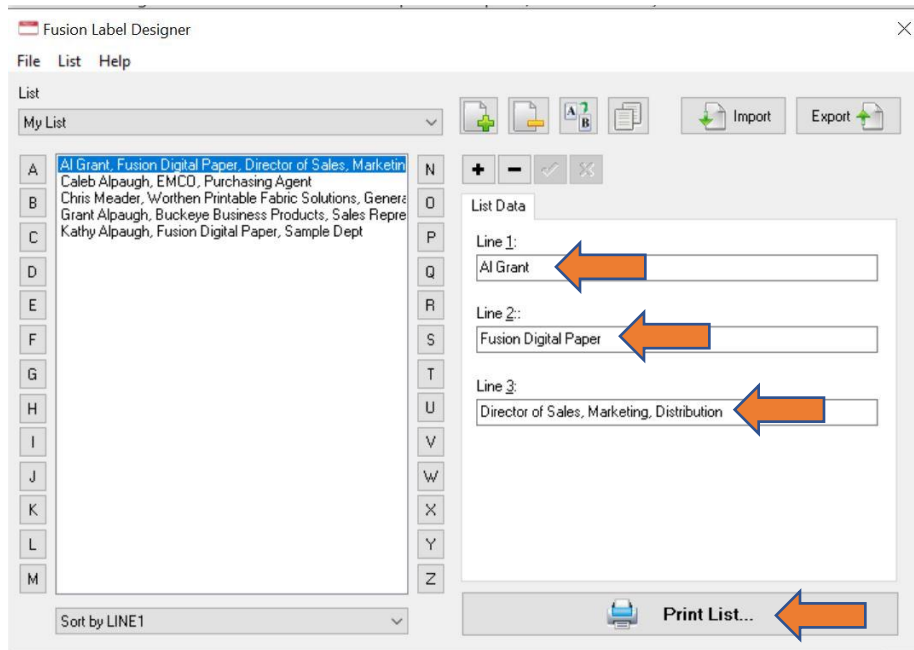
7. You'll be asked to find a database program that you have already created. There are a few different options for how to do this to fit the most common ways that databases are stored.



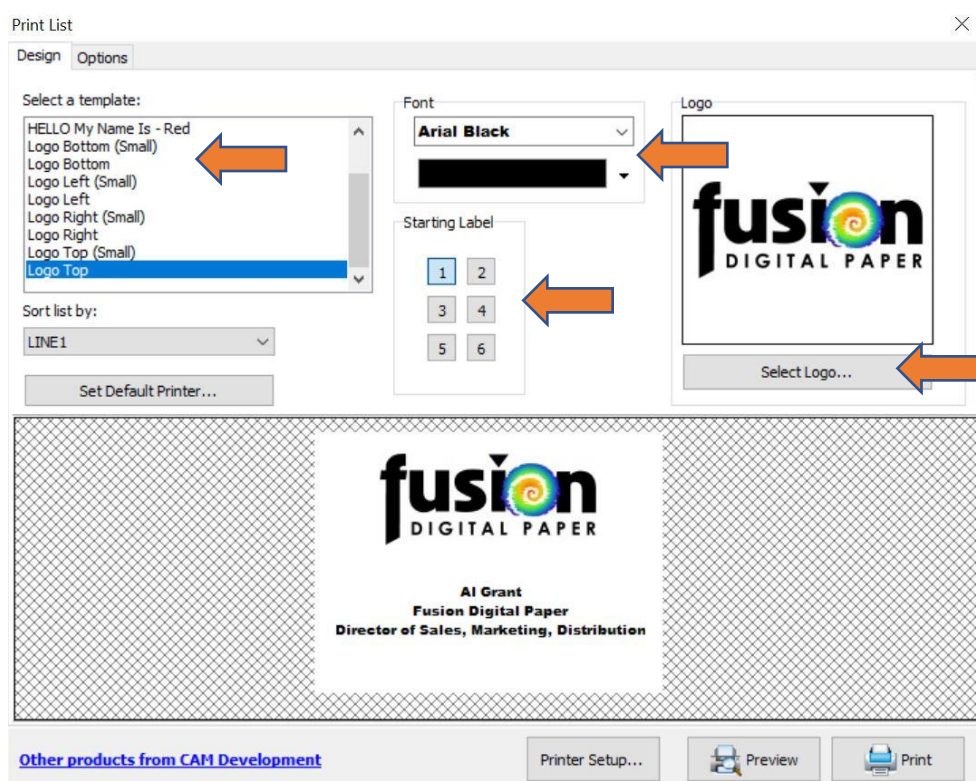
8. Once you locate your database file, you'll be asked to match the lines of text on your labels with the fields in your database file. By clicking the arrow pointing right, you'll match each line with the desired field until all three lines have been matched. If you wish to make a change, click the arrow pointing left.



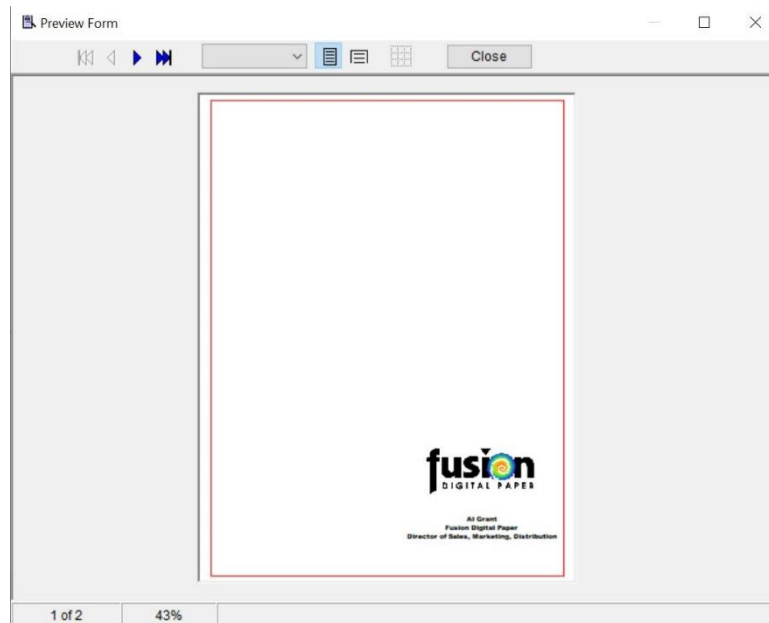
9. Once your database has been imported it will display on the main page. If you click on a contact, you'll be able to check how the fields were imported to make sure that they were matched correctly. Now that our contacts have been imported, we can print some labels by clicking the "Print List" button.



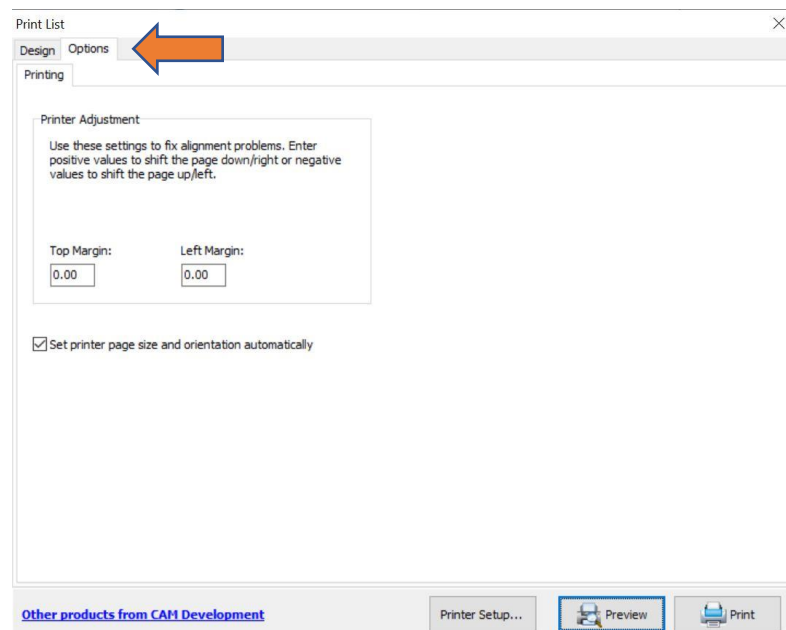
10. In this screen, you can select from a few templates to decide how you want your information to display on the label, such as moving the logo to the top or bottom or using a standard "Hello, My Name Is" name badge. You can also change the logo or picture that will display, font, and text color. You are even able to chose which label position you start with when printing in case you have a sheet that has been partially used.



11. Once you have decided on the design of your template, you can preview how the label will appear on your printed sheets. In this case, the first label is in the 6th position as we already had used the first 5 spots on a previous project.



12. If your printer is slightly out of align, you can adjust the margins by clicking the options button at the top of the "Print List" section.



[Click here if you would like a more feature rich and flexible label software from our partner, CAM Development.](#)